

Crop Weather Risk



Elwynn Taylor

Iowa State University

setaylor@iastate.edu

www.extension.iastate.edu

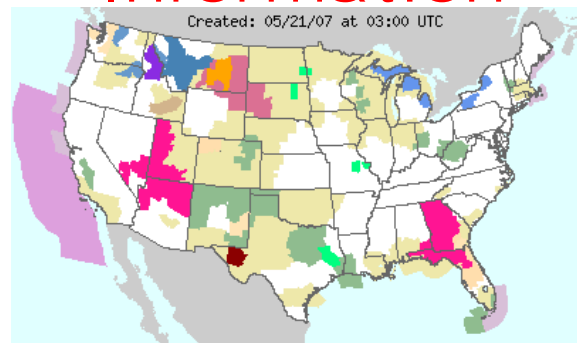


Agronomy



Crop, Soil, & Environment Sciences

Get Weather Information



www.weather.go

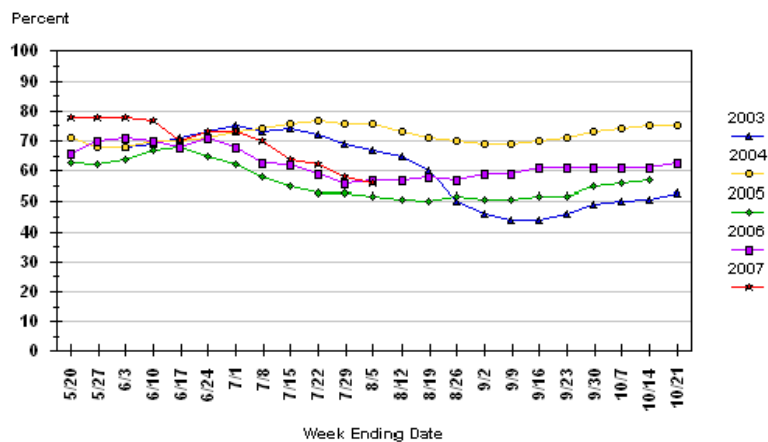


Agronomy



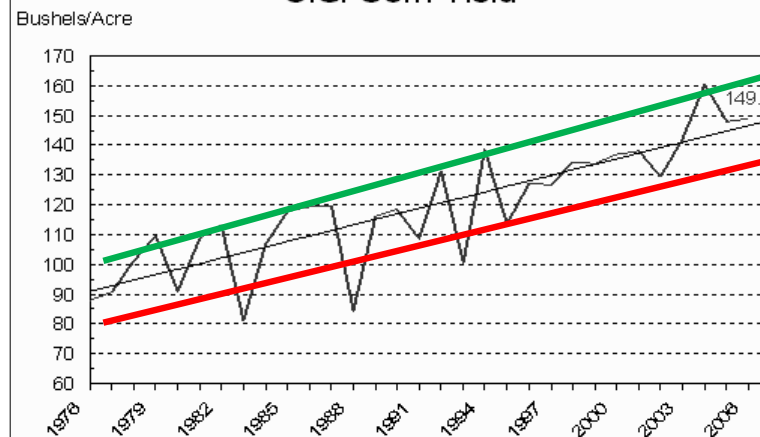
Crop, Soil, & Environment Sciences

U.S. Corn Condition
Percent of Acreage Rated Good or Excellent
18 Selected States



USDA-NASS - August 6, 2007

U.S. Corn Yield

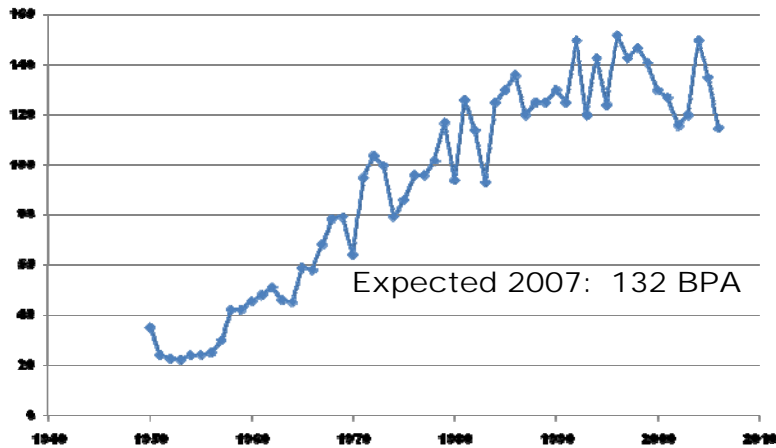


2007 US trend is 148.4 BPA

USDA-NASS
01-12-07

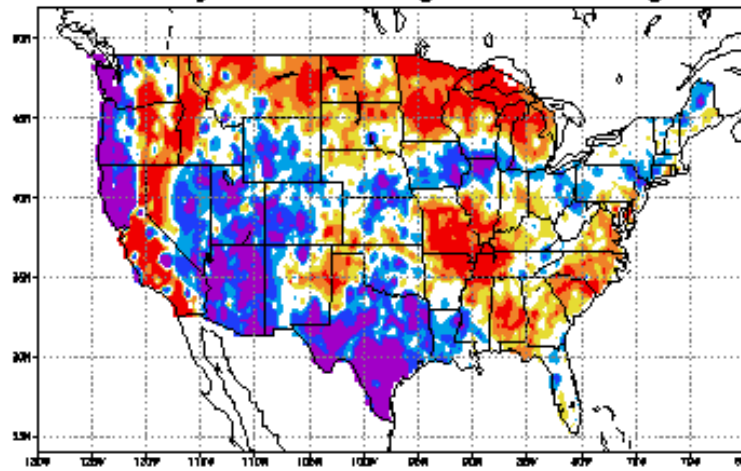
KS Corn

Yield



Iowa State University Extension

Precipitation Anomaly 30 days, ending 2007Aug11

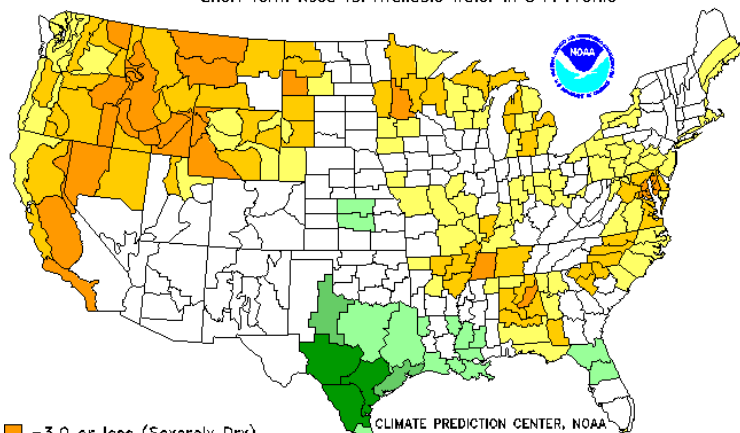


Iowa State University Extension

Crop Moisture Index by Division

Weekly Value for Period Ending 4 AUG 2007

Short Term Need vs. Available Water in 5 Ft Profile

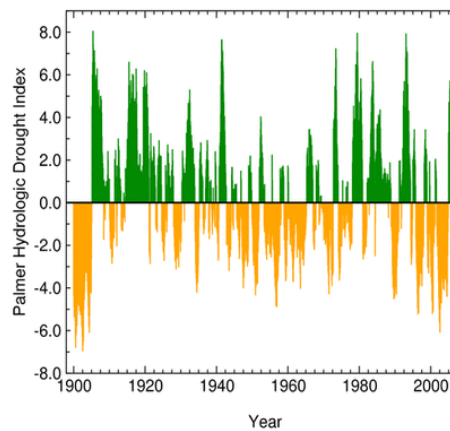


- -3.0 or less (Severely Dry)
- -2.0 to -2.9 (Excessively Dry)
- -1.0 to -1.9 (Abnormally Dry)
- -0.9 to +0.9 (Slightly Dry/Favorably Moist)
- +1.0 to +1.9 (Abnormally Moist)
- +2.0 to +2.9 (Wet)
- +3.0 and above (Excessively Wet)

Iowa State University Extension

Arizona Statewide PHDI*

January 1900 - March 2007



*Palmer Hydrological Drought Index

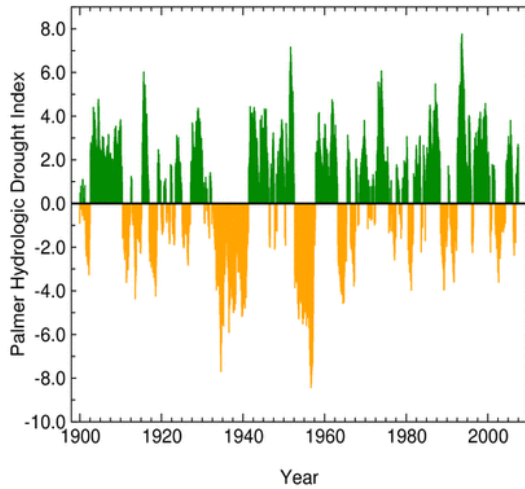
- Dry Spell
- Wet Spell

National Climatic Data Center / NESDIS / NOAA

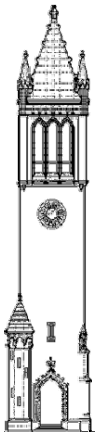
Iowa State University Extension

KS moisture

Kansas Statewide PHDI*
January 1900 - July 2007



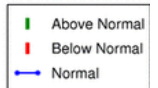
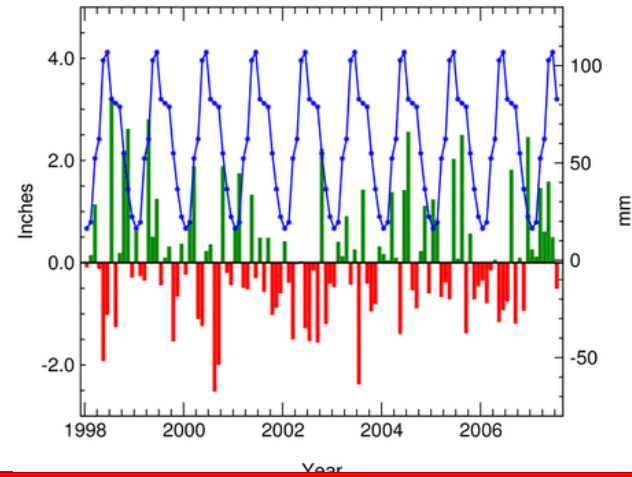
*Palmer Hydrologic Drought Index



Iowa State University Extension

KS Precipitation (9 years)

Kansas Statewide Precipitation
Normal & Departure, Jan 1998 - Jul 2007

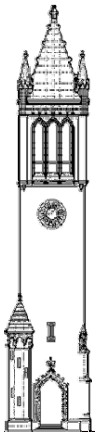
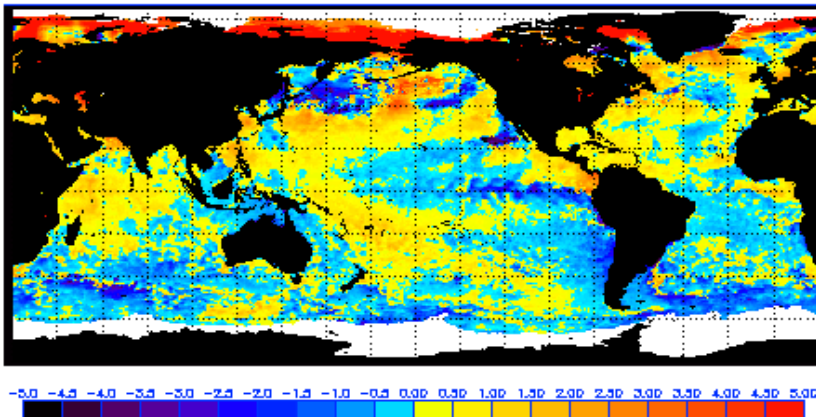


Iowa State University Extension

SST

SOI 12 Aug +0.01

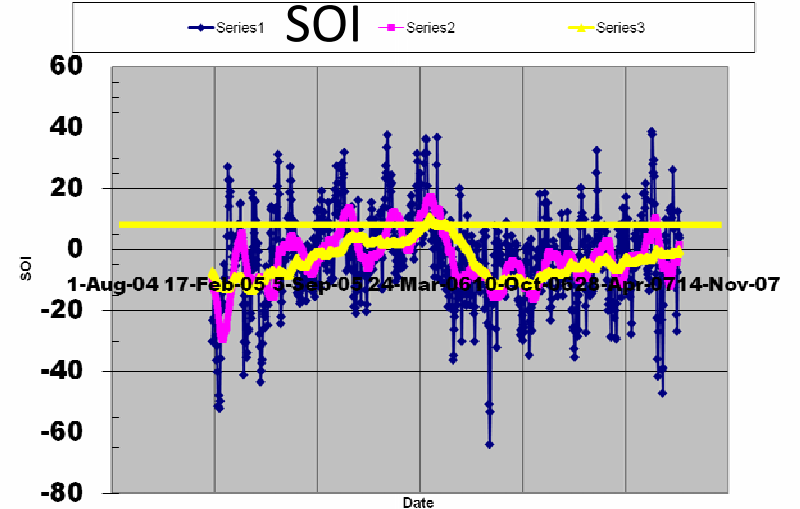
NOAA SST Anomaly (degrees C), 8/9/2007
(white regions indicate sea-ice)



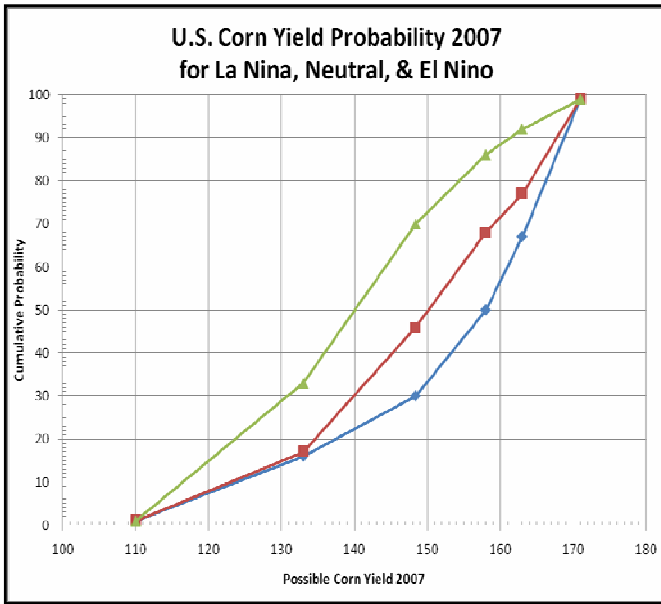
Iowa State University Extension

SOI 22 Jan., 2005 - 11 Aug, 2007

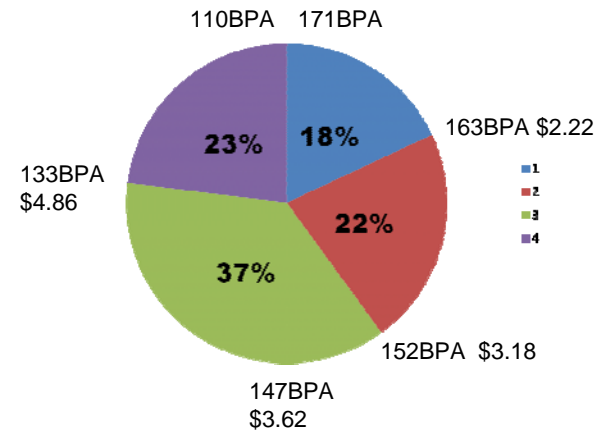
SOI



Iowa State University Extension



Iowa State University Extension



Iowa State University Extension

Iowa State University Extension

World Forecasts <http://www.worldweather.org/>
 US Forecasts etc. <http://www.weather.gov/>
 Precipitation estimate http://www.srh.noaa.gov/rfcshare/precip_analysis_new.php
 World photo http://www.ssec.wisc.edu/data/comp/latest_cmoll.gif
 SST: El Niño <http://www.elnino.noaa.gov/>
 SOI (click "table") <http://www.longpaddock.qld.gov.au/>
 Outlooks (CPC) <http://www.cpc.ncep.noaa.gov/products/forecasts/>
 Iowa data <http://mesonet.agron.iastate.edu/index.phtml>
 IA Climatologist <http://www.agriculture.state.ia.us/climatology.htm>
 RI <http://www.mesonet.agron.iastate.edu/~windmill/RIpage.html>
 Upper air <http://weather.uwyo.edu/upperair/uamap.html>
 (Choose: 700mb, use NO observations, Northern Hemisphere)
 Current weather <http://asp1.sbs.ohio-state.edu/>
 Listen to Elwynn on WOI-AM 640 kHz (12:50pm daily, 12:10pm Fri.)
 Listen on the web <http://www.woi.org/Stream.html>



www.extension.iastate.edu

Agronomy



Crop, Soil, & Environment
Sciences

By Louis M. Thompson 1989 (revised 9/24/2006)
 Adapted by E. Taylor 9/27/2006

	1882	1900	1919 ⁺⁺	1937 ⁺⁺	1956	1974 ¹⁾	1993 ²⁾⁻	*
	1883	1901 ¹⁾	1920 ⁺⁺	1938	1957	1975	1994 ⁺⁺	
	1884 ⁺⁺	1902	1921	1939	1958	1976	1995 ⁺⁻	
1866	1885 ⁺⁺	1903	1922	1940	1959	1977	1996	
1867	1886	1904	1923	1941	1960	1978 ⁺⁺	1997	18.5
1868	1887 ⁺⁻	1905 ⁺⁺	1924 ⁺⁻	1942 ⁺⁺	1961	1979 ⁺⁺	1998	
1869 ⁺⁻	1888 ⁺⁺	1906 ⁺⁺	1925	1943	1962	1980 ⁺⁻	1999	
1870 ⁺⁺	1889 ⁺⁺	1907	1926	1944	1963	1981	2000	
1871 ⁺⁺	1890 ⁺⁻	1908	1927 ¹⁾	1945	1964 ⁺⁻	1982 ⁺⁺	2001	
1872	1891	1909	1928	1946	1965 ⁺⁺	1983 ¹⁾	2002 ⁺⁻	
1873 ⁺⁻	1892	1910	1929	1947 ¹⁾	1966	1984	2003	
1874 ⁺⁻	1893	1911 ⁺⁻	1930 ¹⁾	1948 ⁺⁺	1967 ⁺⁺	1985 ⁺⁺	2004 ⁺⁺	
1875	1894 ¹⁾	1912	1931	1949	1968	1986 ⁺⁺	2005	
1876	1895	1913 ¹⁾	1932 ⁺⁺	1950	1969 ⁺⁺	1987 ⁺⁺	2006	28.5
1877	1896 ¹⁾	1914	1933	1951 ⁺⁻	1970 ⁺⁻	1988 ¹⁾		
1878	1897	1915	1934 ¹⁾	1952	1971 ⁺⁺	1989		
1879	1898	1916 ⁺⁻	1935	1953	1972 ⁺⁺	1990		
1880	1899	1917	1936 ¹⁾	1954 ¹⁾	1973 ⁺⁺	1991 ⁺⁻		
1881 ¹⁾		1918 ⁺⁻		1955 ¹⁾		1992 ⁺		

END

Elwynn Taylor

Iowa State University
setaylor@iastate.edu



www.extension.iastate.edu

Agronomy



Crop, Soil, & Environment
Sciences